

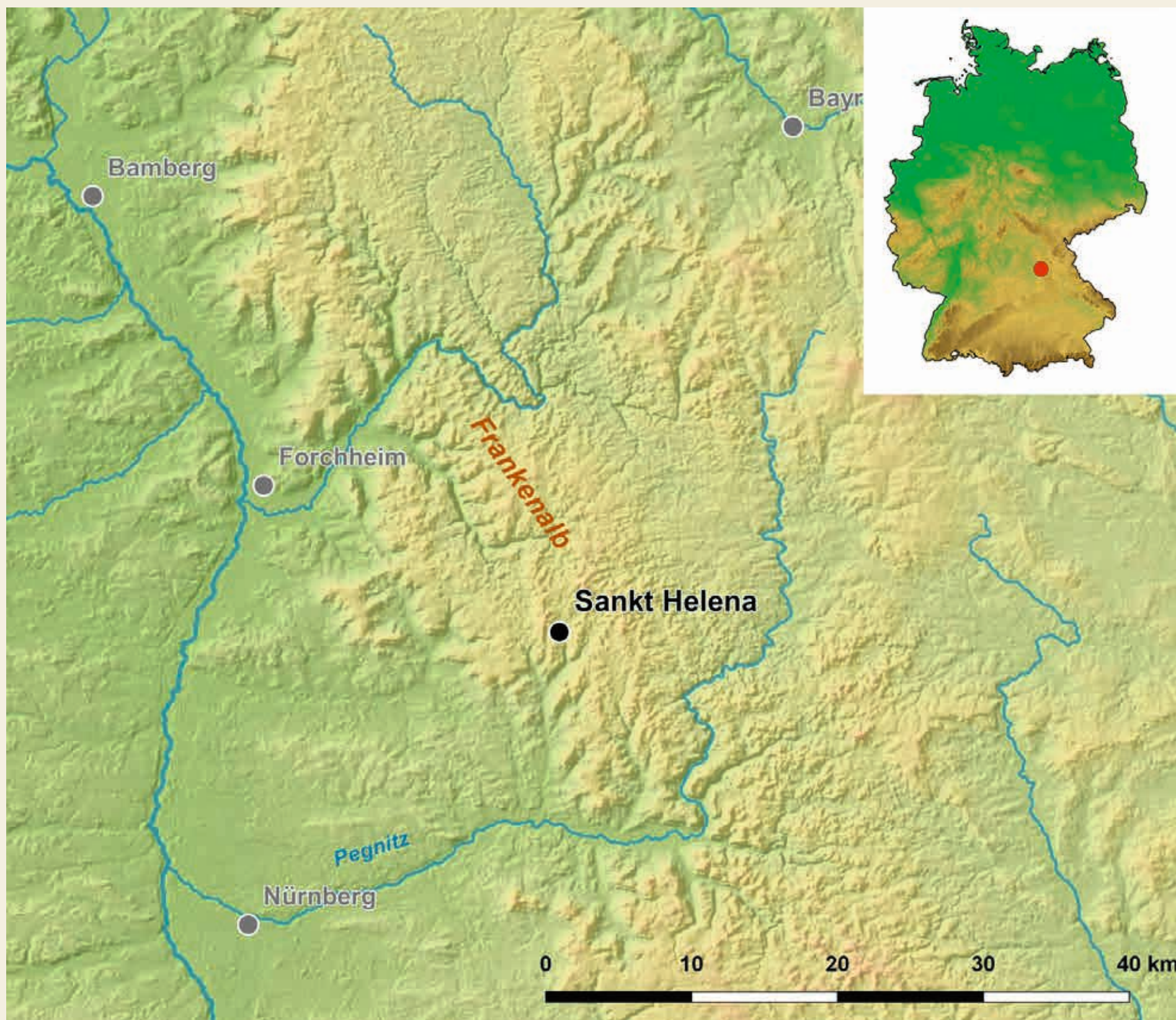
Pots and Pins

The burial mounds from Simmelsdorf - St. Helena

Darja Abramov and Katja Hagemann

Location and research history

St. Helena Simmelsdorf is a community in the rural district of the Nürnberger Land, which is situated approximately 30 km East of Erlangen bordering the Franconian Alp in Germany (Mischka 2017, 4). The excavation area consists of four grave mounds of different sizes.



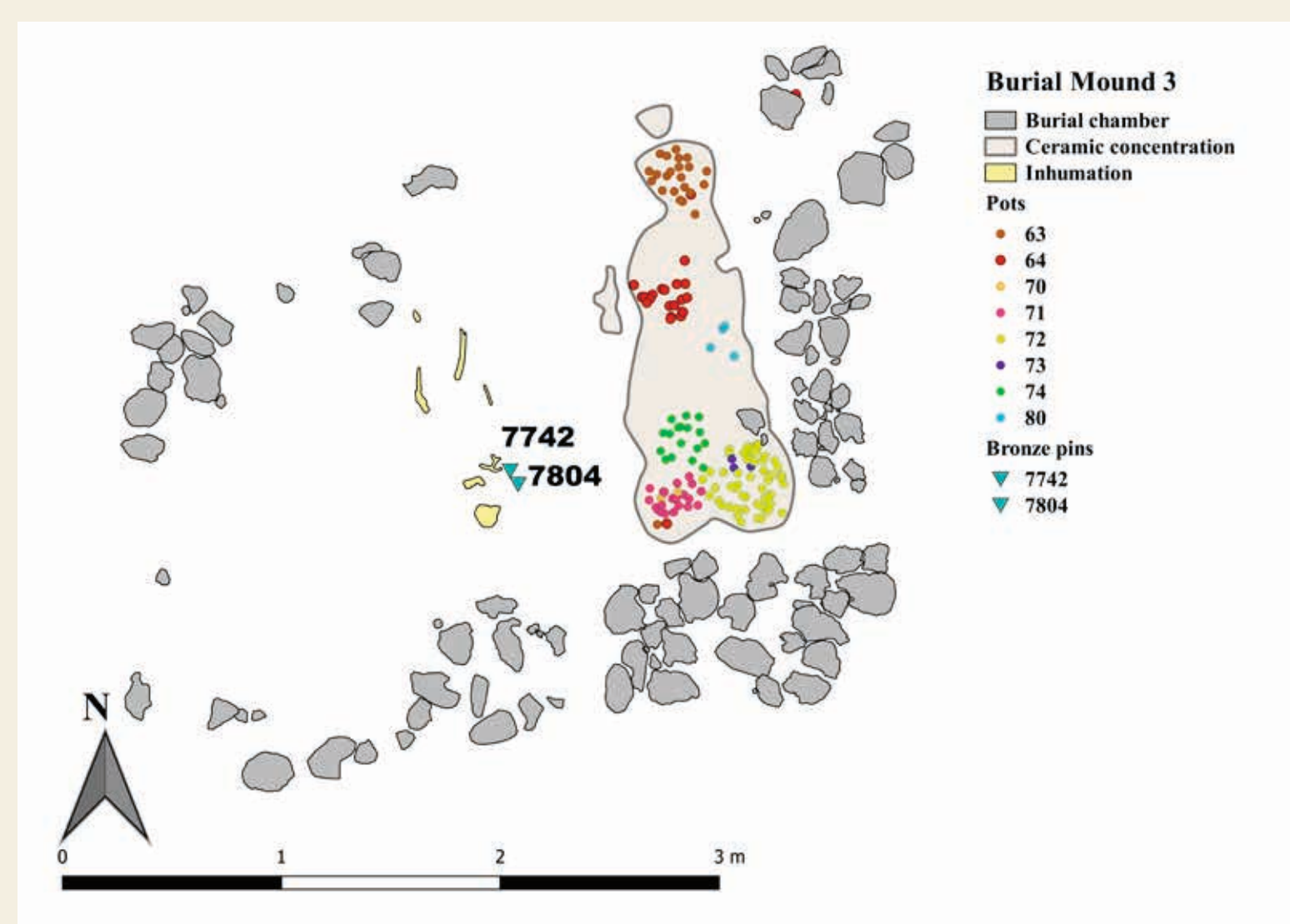
Geographical location of Simmelsdorf - Sankt Helena (C. Mischka)

The four burial mounds

Grave mound 1 (HA D1/D2):
Female burial; numerous grave goods (amber pearl necklace, metal jewelry and pottery); poor condition.
Grave mound 2 (HA C1):
Male burial; numerous grave goods (pottery, bronze pins, amber ring and iron sword); prehistoric plough traces.

Grave mound 3:

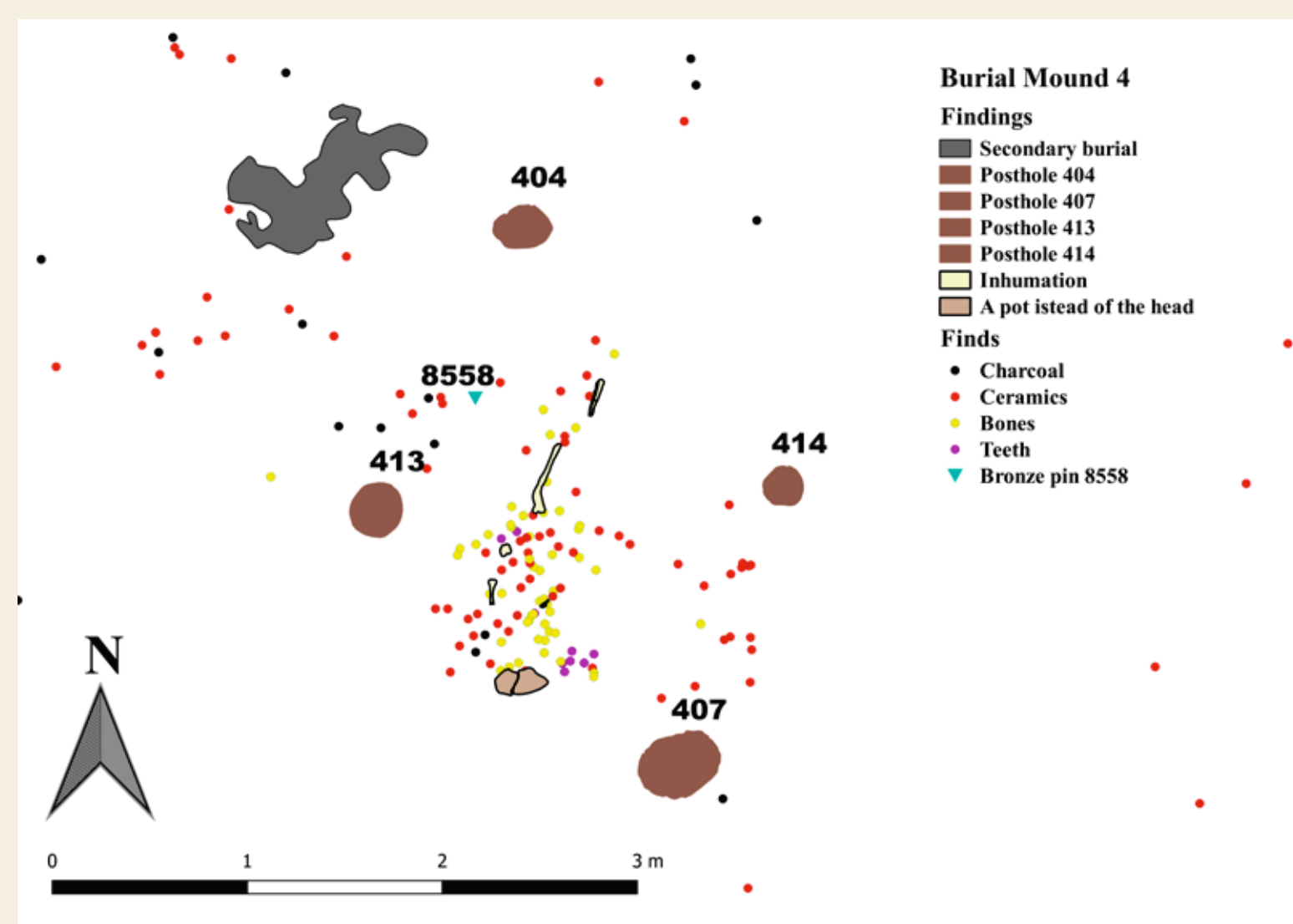
Probably female burial; numerous undecorated and decorated ceramic objects; two bronze pins.



Plan of the burial mound 3 (D. Abramov, C. Mischka)

Grave mound 4:

Body burial (remains of the left half of the body); possible reburial in the western margin; few grave goods (occasional pottery, one bronze pin).



Plan of the burial mound 4 (D. Abramov, C. Mischka)

Questions of the Bachelor theses of Abramov and Hagemann

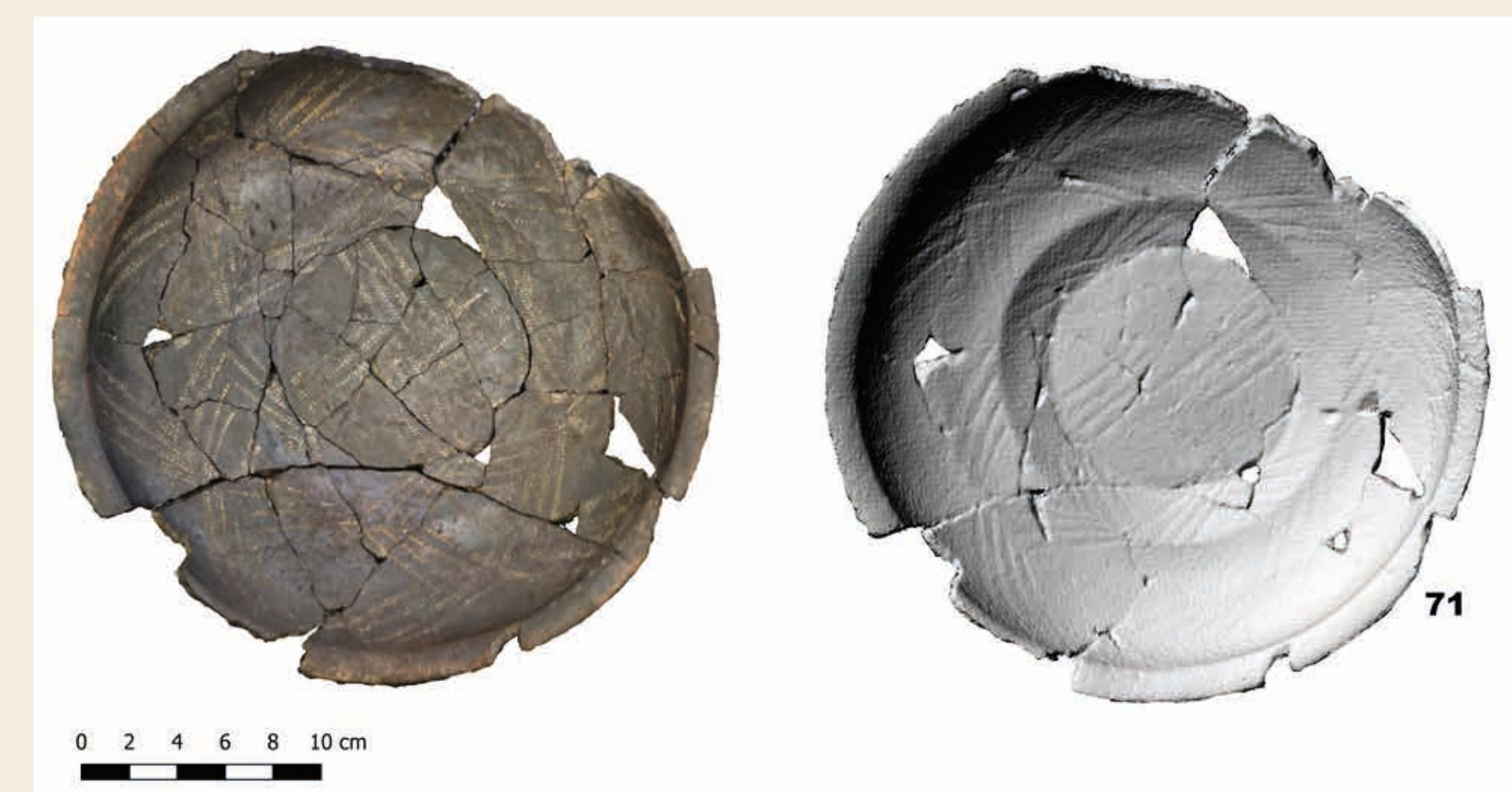
Dating & Regional Assignment
Gender-differentiated burial

The pottery from burial mound 3 from the Late Hallstatt cemetery St. Helena, Simmelsdorf from Darja Abramov

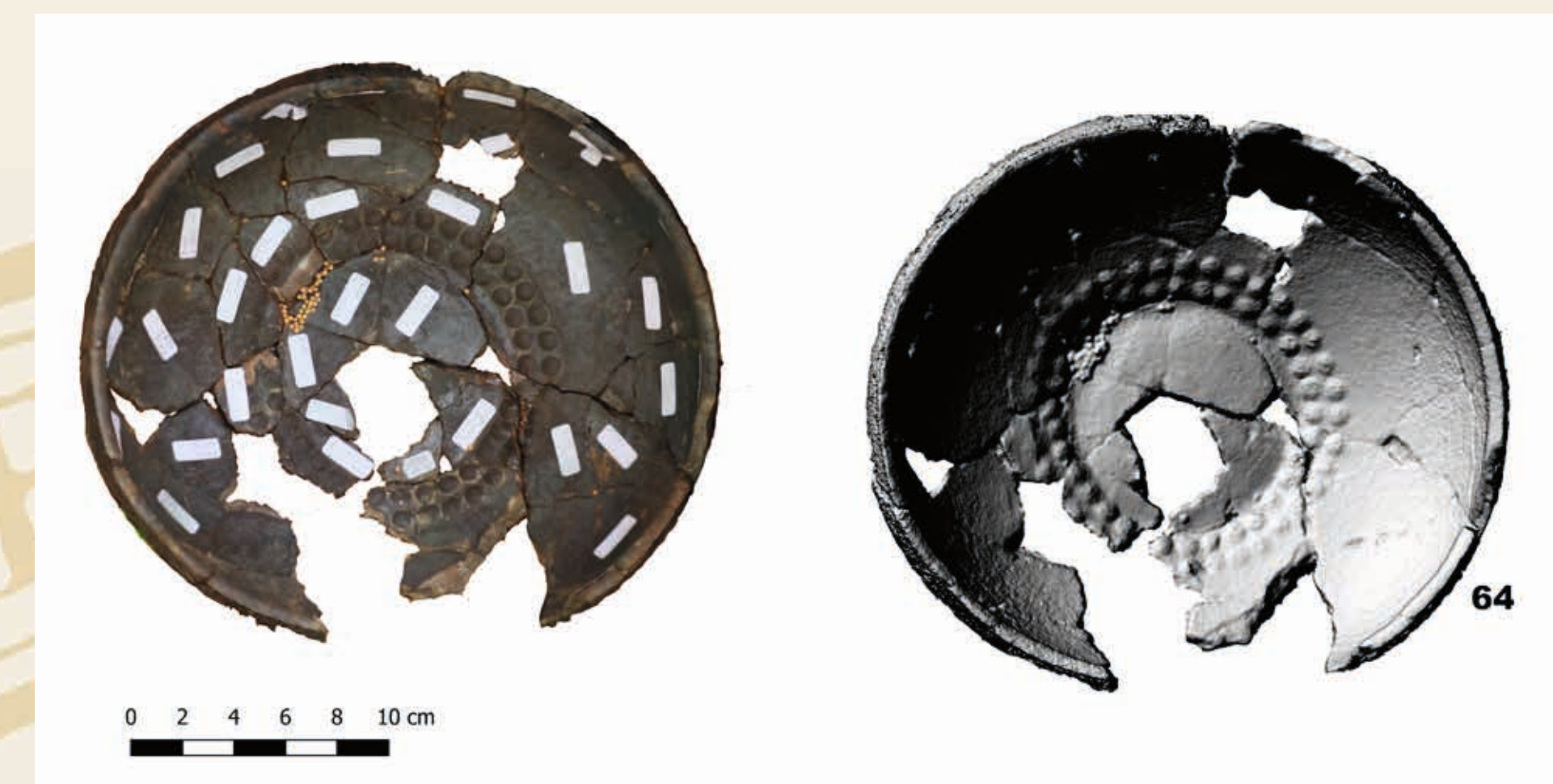
The questions will be analysed on the basis of ceramic objects from grave mound 3.

Current status:

Post-processing of the ceramics (washing, drying, formation of vessel units, photography, drawing, feature analysis).



Pot Number 71 from burial mound 3 (D. Abramov, C. Mischka)



Pot Number 64 from burial mound 3 (D. Abramov, C. Mischka)

The pins from burial mounds 3 and 4 from the Hallstatt period in St. Helena, Simmelsdorf from Katja Hagemann

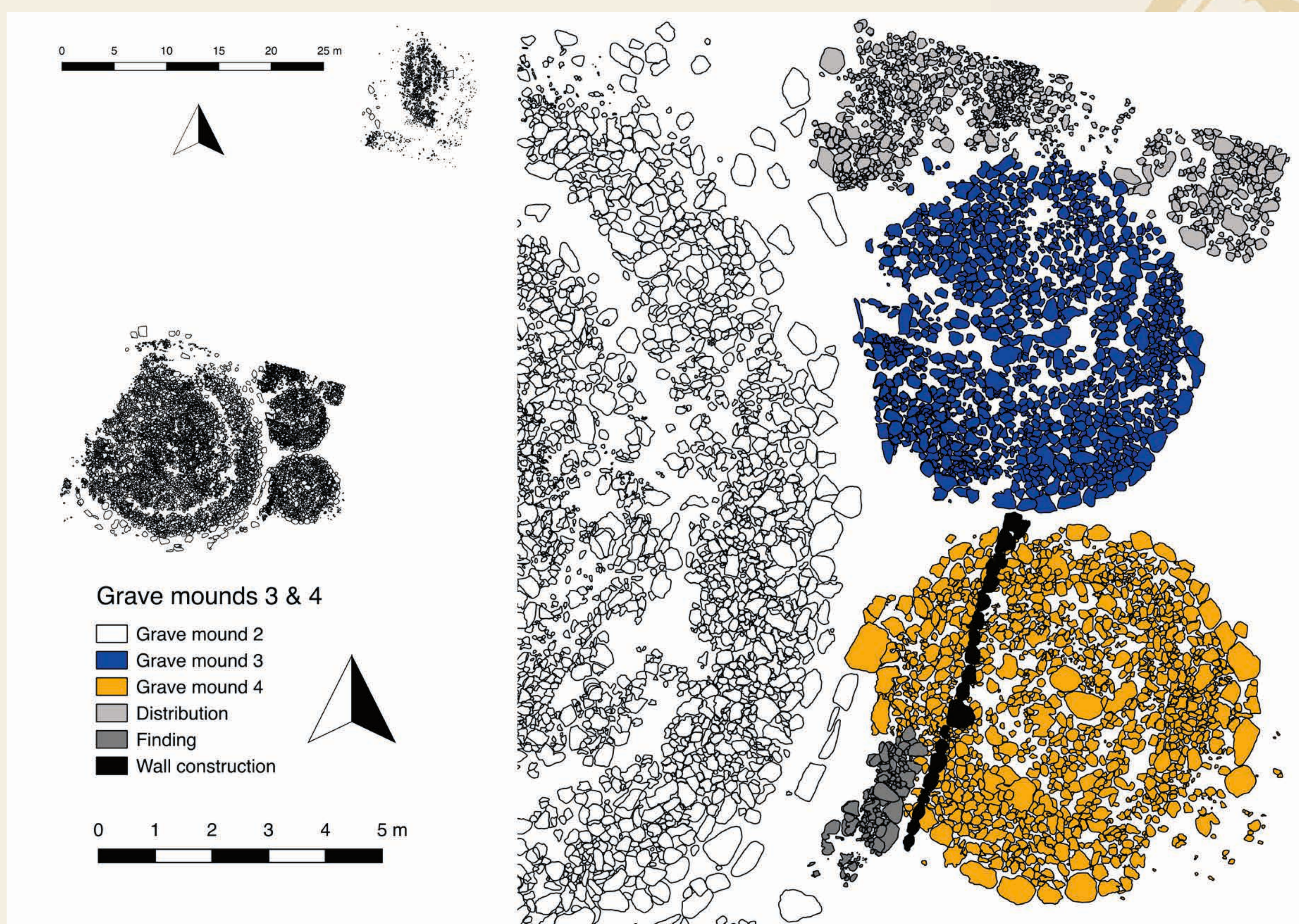
The questions will be analysed on the basis of the bronze objects of mounds 3 and 4.

Current status:

Post-processing of the bronze pins (washing, drying, photography, drawing, feature analysis, 3D scan).



Bronze Pins from burial mounds 3 and 4 (K. Hagemann, I. Tasimova)



Barrow cemetery of Simmelsdorf - Sankt Helena (K. Hagemann)